



MARCH 2018

Paparoa A&P Show excels

The rain held off and fortunately there was a great team of volunteers who stepped up to help this year's small Show committee present another successful show for the North Kaipara Agricultural Association. A huge thank you must go to the Paparoa Lions who helped in many areas from putting up tables for the Indoor Section, and helping outdoors, to working on the gates on Saturday. The Young Farmers also came in to help with the show while a great team of indoor volunteers again made this section run smoothly.



Interestingly this year saw one third of indoor section entrants come from outside the Kaipara area! There was a large growth in entries in the home-spun wool section - all of very high standard. Cheese featured this year with the section being very well organised by Jas Futter. The judge was heard to say that the cheese made by one entrant would have won a medal if entered in the National Show! Dahlias excelled this year with a very high number of entries including lovely blooms from Matakoho House. cooking, preserves and of course the vegetables were also well represented.



Exciting progress for Medical Society

Following the purchase of the former Kaipara Council building last July, the Paparoa Medical Society has been working hard behind the scenes to turn a vision into reality.

This has now taken a major step forward with the formation of a new company to be known as Paparoa Village Health Care Ltd. It is a joint venture between Paparoa Medical Society Inc (PMS) and Coast to Coast Health Care Ltd (CtC) which will own the property with each having equal shareholding.

PMS chairman, Graham Taylor said "This move signals a very positive future for the provision of health care facilities in Paparoa and surrounding districts. We are very excited to have Coast to Coast as equal partners in this venture".

The immediate goal is to renovate the building to provide modern and welcoming facilities for CtC and its patients. The other tenants, Paparoa Community Library and White Rock Gallery are being relocated within the existing building and will have premises designed to meet their needs. It is hoped that any disruption during the renovations will be minimised and the building will reopen to the public as soon as possible.

Converting an existing building to cover modern regulations for public use is very challenging and the Society has taken time to ensure it is fully conversant with those requirements. Graham believes that the outcome will be a facility that will serve the Paparoa community for many years to come and will offer a wide range of possibilities for further development.

Coast to Coast Director, Tim Malloy said "We are looking forward to working with the community to develop health services in Paparoa. This initiative allows us the opportunity to grow services further".



Sports & Games Family Fun Afternoon Saturday 10 March



Paparoa Sports and Recreation Association, supported by Paparoa Lions and Progressive Paparoa Inc. (PPI) are holding their fourth annual Family Sports and Games Fun Afternoon on Saturday 10th March from 3pm. ENTRY IS FREE!

T-ball, ripper rugby, tennis, netball hoops, egg throwing, skipping, preschool games, an obstacle course, tug-of-war and water games, will be followed by a sausage sizzle and chips for \$2, not to mention a good old fashioned lolly scramble and team spot prizes.

Arrive at 3pm for a 3.30pm start. Mixed teams will be made up on arrival. See you at the Showgrounds on the 10th March. Bring the whole family and join in the fun.

Any enquiries call Jane Bailey 431 6148, or Ken Chambers 431 7443.

Paparoa Press PP

PUBLISHED MONTHLY BY

Progressive Paparoa Inc. (PPI),
for Paparoa, Pahi, Matakohe,
Whakapirau and Tinopai.

CIRCULATION 1,040

CONTACT US - SALLY TAYLOR, EDITOR

- press@paparoa.org.nz
- ph 09 431 7209
- PPI, PO Box 107, Paparoa 0543
- www.paparoa.org.nz

ADVERTISING

Rate Card available by email
Booking & Copy deadline:

15th of month

Publication date 1st of month

Ruawai Lions Annual Auction

SATURDAY 17 MARCH Kaipara Kumara Forecourt, Ruawai

TRADING TABLE: 9.00 am

VIEWING OF GOODS: 9.30 am

AUCTION STARTS: 10.00 am



Sponsors' products for auction – includes farming items.

*Antiques, furniture, electrical appliances, toys, books,
clothes, bric-a-brac etc. Food and refreshments available*

Contact: Jim Simpson 09 439 2557 jdsimpson@slingshot.co.nz

Photo competition begins

For this competition we want to photograph of '**INTERESTING BUILDINGS IN THE KAIPARA**', capturing the building's story and environment all in a photo!

So, look around and see what you can find - some buildings you may pass every day and some may be hidden away.

Previously we have had some beautiful Kaipara photos in our summer and winter competitions. Anyone living in the Paparoa Press delivery area can enter. A professional photographer will choose the



winning photo for each of the three months and a selection will be published.

The competition will run for 3 months (March to May inclusive), a grand prize-winner will be selected from all entries. Please send entries to press@paparoa.org.nz by 5pm on 20th of each month. Competition starts March 20 and finishes May 20.

Editor Wanted !

Is desktop publishing your thing?

Do you love community involvement?

Enjoy a challenge?

The **Paparoa Press** is an important part of the local community and provides:

- a vital source of information specific to our part of the Kaipara.
- a vehicle for sharing local knowledge on ... history, the environment, group activities, events & attractions and so on
- a platform for local service providers and businesses to reach potential customers ... in other words, **reaching your community.**

The Press is looking for a new editor, (a modest remuneration provided), please contact press@paparoa.org.nz

PETE THE BUILDER
your local friendly builder

Peter Clark

Ph: 0276 713 416

petethebuilderltd@gmail.com

582 Pahi Road, R D 1, Paparoa, 0571
A/hrs 09 431 6005

LIFESTYLE AUTOS Roger Price



Full Mechanical Services Warrants of Fitness

**Paparoa Valley Road
next door to g.a.s.
Phone 431 6620**

Photo competition: guidelines and rules

- Photographs must be taken between March 1 and May 20; a maximum of 2 entries per person per month will be accepted.
- Photos to be sent by email by the 20th of the month to press@paparoa.org.nz as high-res jpgfiles with a title and your name in the subject line, (your phone's photos also most acceptable)
- Photos must be inspired by interesting buildings in the Kaipara region depicting some of our history, our lifestyle, and our environment.
- By entering this competition, you agree that PP may use your name and images for publication.
- The person submitting the image must be the image owner (own copyright), have unrestricted use of that image and confirm that permission has been given by any people shown in the image and that it has not been exhibited previously.
- Judges' decision is final and no correspondence will be entered into.

Pegasus Engraving will sponsor each month's prize - either your image on a 5x7 chromalux board (caption optional) or an engraving etched onto a white mug. Prize to be organised within one month of close of competition. PP



SHOP & BREW

**Antiques
Home Brew Supplies
Great Gift Ideas
Layby Available**



Winter hours:

Wed-Fri 10am-4pm

Sat 9am-3pm and Sun 10am-2pm

1994 Paparoa Valley Rd

09 431 6547

THE KAURI MUSEUM

Real New Zealand Heritage

What's on at your Museum

Exhibitions:

- * Summer @ Totara House 5 Feb-5 Mar
- * Tudor Collins - 'Man of Many Faces'
- * Textiles Pinnies & Pies - from 7 March
- * Anzac display from 21 April

FREE ENTRY to the museum for residents of the old Otamatea District
5 Church Road, Matakohe, Northland. p: 09 431 7417 w: www.kaurimuseum.com

St John needs YOU to step up!

The St John Kaiwaka and Maungaturoto teams are dedicated groups of volunteers with one thing in common - the desire to make a positive difference in our community. It is our volunteers, many of whom have other jobs, who keep our ambulance service going.

St John is here 24 hours a day, 7 days a week, and 365 days a year - saving lives and responding to medical emergencies and accidents around the clock.

There are currently six active St John Ambulance volunteers based at Kaiwaka and 15 at Maungaturoto. Both stations are run by Station Manager Stephen Rosser. Currently, the Maungaturoto ambulance covers seven day shifts plus four night shifts, and Kaiwaka ambulance covers the other three nights. Our community can rest assured that we are always ready to step forward when help is needed.

However, our ultimate goal is to have both Kaiwaka and Maungaturoto ambulances on duty 24/7. That way our area would be covered by at least two ambulances at all times - further increasing our capacity to care for the community.



To achieve that goal, each station requires 25 volunteers. That can only happen if others in the community - **YOU** - step up with us. The more volunteers we have, the better equipped we are to help others and provide cover if a volunteer is unwell or unable to do their shift. Here at St John everyone pulls together from nearby stations, but if their ambulances are on jobs, the surrounding area's resources are stretched. It's always our objective to reach people in the shortest possible time. When you call 111, every minute can count. We have systems in place to give highest priority to those in the greatest

medical need, but we want to ensure that every time you call us, we do have immediate means to help. Bigger volunteer teams in Kaiwaka and Maungaturoto would ensure that both stations would always be ready to go, with another crew available for any other emergency.

What can YOU do?

You can join our mission to step forward whenever help is needed, for better, for life. Being an ambulance volunteer is the ultimate way to show your commitment to the wellbeing of your community. We will work together to make the experience rewarding and practical for you, and should you wish, there are life-long career opportunities available.

To get involved, please contact Station Manager Stephen Rosser 021 355 734 or go to www.stjohn.org.nz, click the 'ABOUT' tab, then 'JOIN ST JOHN'.

Stephen Rosser

KMU SURVEYS LTD
MAUNGATUROTO

Ken Urquhart

Licensed
Cadastral
Surveyor



09 431 8705
021 161 2344

kenurquhart@xtra.co.nz

Painter & Decorator

Tradesman's quality
work guaranteed



- Interior
- Exterior
- Spray finishes
- Roofs
- Waterblasting

For your free quote
call Mike 021 529 025

Heartfelt appreciation

On January 7th I woke up as normal and made a coffee, but the next thing I knew I was staring at a couple of paramedics, my wife, and my neighbour. I was feeling rather unwell to say the least!

I had suffered a severe attack of ventricular fibrillation. I was told they could not find a pulse or blood pressure. All this happened at our little bach in Fisher Street at Pahi! I was transported down to Pahi Reserve where the volunteer fire brigade and some locals were busy systematically picking up all the debris from the flooding a couple of days earlier. This was so the North Power Rescue Helicopter could land. I was then flown to Whangarei Hospital, stabilised and then flown to Auckland Hospital.

Two weeks later I was at home and here to tell the tale!

The reason I am writing this is because it is not until something like this happens that you fully appreciate the great place Pahi is and how responsive and supportive the locals are! The dedication and professionalism of the St Johns paramedics, volunteer fire brigade and the Helicopter crew is amazing. It is very humbling to see so many people working together for one person who needs help, many of whom are volunteers.

I want to pass on a great big thanks to all who helped me because you saved my life. I have lifestyle changes ahead but importantly I'm still able to go fishing with my fishing mate thanks to you all!

Bill Cartwright
Director, Guardian Housing Services Ltd

St John Otamatea

Paparoa –
Maungaturoto –
Kaiwaka



St John
Here for Life

Thank you

In 2017, your generous donation
helped support.

1,034 callouts

125,165km covered

Approximately **4,000** hours on
the road

Find out how you can help at
stjohn.org.nz

Paparooa Print Shop

**At Skelton's
Paparooa Drapery
431 7306**



**See Robyn for
all your printing needs**

SHEPPARD ELECTRICAL LTD

ELECTRICAL INSTALLATION
AND MAINTENANCE

Bill Sheppard
Electrician



021 975 618

OR
a/h 09 431 7196

Never a dull moment at The Kauri Museum

January and February were busy months at The Kauri Museum. Inclement weather always has the unusual effect of bringing visitors who would otherwise have gone to the beach. Combine this with all the tourists in Northland at the moment and parking has been hard to come by at The Museum.

Offsite, our Community Outreach team was busy with presentations, games and other activities at Pahi Regatta and Paparooa Show.

Totara House

Totara House has been open to the public again for most of February, and will close on 4th March. A successful pop-up tea shop operated on Sunday 18th with another to come on the closing Sunday. Visitors welcomed the opportunity to sit in the garden with a cup of tea and reminisce, or to relax and listen to the birdsong. Hopefully the fine weather will still be around for the next tea shop opportunity! A big thank you all the volunteers and Friends of the Museum who assisted us with these events.

Social Media

Keep an eye on the museum's



The Kauri Museum display attracted many visitors at the Paparooa A&P Show

website and social media pages for stories and photographs from the collection. On the website, 'Tatty's blog' relates tales of Tatty Smith of Totara House accompanied by photographs from the Smith family photo albums. Facebook and Instagram carry images of collection items and their story. Recent posts referenced Lunar New Year, Shrove Tuesday and Valentine's Day with our love story post earning a commendation from Tourism Results New Zealand.

'Pinnies and Pies'

Our new textiles exhibition 'Pinnies and Pies' opens upstairs in the Boarding House on Wednesday 7 March. This display focusses on everyday and special occasion domestic garments from the collection that show the pride that women of earlier times took in their household arrangements.

Anzac Day

Arrangements for this year's Anzac Day and display in the Volunteers Hall are in process. The serviceman commemorated will be Max Wallis of Maungaturoto who passed away late last year. The

ANZAC display will open when Dr Adam Claasen visits the museum to speak to his book, 'Fearless – the extraordinary untold story of New Zealand's Great War airmen' on Saturday 21 April.

Upcoming events:

- 'Pinnies and Pies' - new Textiles exhibition from 7 March
- School Holiday DIY Workshop 18 April.
- Anzac Display from 21 April
- May 'Madness' the museum's biennial fundraising evening to be held Saturday 5 May in the Matakoho Hall. Watch this space for more details.

Selwyn Centre Volunteers needed

Paparooa's Selwyn Centre is a social activity for over 65's residing in the Otamatea area. It provides gentle exercises, morning tea, fellowship, varied activities, games, laughter and fun.

If you feel you could spare 2 or 3 hours on a Thursday morning and would like to be involved in entertaining our guests, please contact the co-ordinator, George.

Ph: 09 431 6224

ADVANCED Pest Control & Property Care

Pest Control

PLAN A: One off treatments for specific pest problems

PLAN B: Full guaranteed maintenance Pest Control service plans for commercial customers.

Upholstery cleaning

Full upholstery cleaning of all furniture - lounge suites office chairs

Carpet Care

Includes pre-spray treatments with stain removal and hot water extraction
Patch repair also available

House washing

Soft Chemical Wash
Pre-painting Wash

Water Blasting

Concrete
Decks

Tool & Equipment Hire

Gardening & Building Tools
Water blaster, Mower, Grinders etc

Flood recovery

Carpet Drying
Dehumidifier rental
Full Commercial

STOP THE INVADERS NOW !

Mobile 021 163 4974 Free Call 0800 238 2633
keith@advancedpestcontrol.co.nz www.advancedpestcontrol.co.nz

EMPIRE ART & COLLECTABLES

Shop Hours

Fri, 10-4

Sat, Sun 9-3

1994 Paparooa Valley Road

Phone: 021399555

ORIGINAL ART & QUIRKY CRAFT
TEXTILE & SILVER JEWELLERY
MORGAN HAINES CERAMICS
BONE & WOOD CARVING
PHOTOGRAPHY
ONE OF A KIND PIECES
SAM HUNT WORKS
HOME & GIFT WARES
LOCAL ARTISAN PRODUCTS
RETRO & VINTAGE COLLECTABLES

Lazy summer picnic

In mid January many enjoyed the second annual Potluck Picnic on the Village Green. The varied array of dishes made for a delightful feast for meat eaters, vegetarians, and vegans alike.

We were privileged to have live music from Fred Renata and he was joined by daughter Amy who shared many of her original songs - what a treat! Of course, it was the company that makes the day. People of all ages gathered under gazebos or in the shade of the trees. One gazebo hosted a sea of children and we enjoyed meeting some families who have just moved into the community. Like last year, the day served as a reminder of what a great community we live in! We hope even more of you will join us next year.

Many thanks to Progressive Paparoa Inc (PPI) for sponsoring the event.

Jocelyn McKenzie



Cameron Philips CABINETMAKER Matakohe



- Kitchens
- Custom Furniture
- Furniture repairs & restoration
- Custom run mouldings
- Stairs & Timber Doors
- Residential & Commercial Joinery

QUALITY WORKMANSHIP

09 431 7579

cam@cp-cabinetry.co.nz

<http://cp-cabinetry.co.nz>

Garden rambles

The Paparoa Garden Circle's first garden ramble this year was close to home on Pahi Road. We were treated to two spectacular gardens - what surprises awaited us up both the long driveways. Many thanks for sharing with us. A picnic lunch under the lovely old Morton Bay Fig followed. even though it was still a bit wet under-foot from the king tides.

Margaret Bailey

Gardens 'r' us

As members of the Garden Club
We try to get about,
To visit gardens big and small
Sometimes the Club will shout.
We're open to the
members' thoughts
Of where they'd like to go.
We try to cater for all sorts
The quick ones and the slow.
Do come along
and join with us
And you will surely see
Such beauty born of nature
But weeded lots by me

Merle

Matakohe cycleway extension?

The planned Kaipara Cycle/walkway at Ruawai has begun construction. Ruawai Promotions have led the way by initiating a track along the stop bank from the wharf to Simpson Road at the mouth of the Awaroa River.

This leads onto Te Kowhai Road, so now we need Matakohe people to think where they would like the next section of the trail to go to the Matakohe Museum where it will join the proposed NZTA old bridge trail.

The trail does not need to be the shortest way, but should be off road as much as possible to make it safe and not annoying for road users. It can follow streams or waterways, go through native bush where possible and does not need to be flat. It would be great to have a group of interested Matakohe people to promote and co-ordinate this section.

In Otago many local farmers were initially against their trail being formed but now they've totally changed their minds as the trail brings in more income than farming! Over 100 cyclists a day ride their track between October and May (with no litter and no problems of any kind along the trail).

Mangawhai has its group of "trackies" who are building tracks through the bush and having fun while they are at it. Maybe Matakohe may have their track builders in the future?

If you are interested and have ideas, and would like to be part of the planning or later building, please let me know and we can prepare a plan and be in for the funding available at the moment!

Stella 0211490877 or stella.clyde@gmail.com



ADAM STEVENS BUILDER

Licensed
Building Practitioner

For new builds,
alterations and roofing

021 741 363 A/H 09 431 6245

Award winning
extra virgin olive oil



Grown on the edge of the Kaipara.
Winner of two golds, one silver and best
in class at the 2016 Olivetti Awards.

Order from our website
www.chapeloliveoil.co.nz
or visit our olive grove at
46b Merrill Road Paparoa
Ph 09 431 7572

CABINS FOR RENT



2.4 x 3.6m \$65 P/W
2.4 x 4.2m \$75 P/W
plus delivery & bond

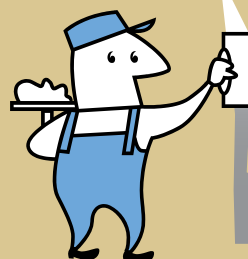
INCLUDES POWER LEAD,
CARPET, AND CURTAINS

FULLY INSULATED

Ph Keith 021 2394251

TINOPAI PLASTERERS

WE GUARANTEE THE HIGHEST QUALITY FINISH



35 Years experience in...

- GIB Stopping
- Fibrous Plastering

for FREE quote, call us now!
Trevor 021 0300 073

AL's Upholstery

Alan Hilton



**Automotive
Furniture
Covers
Seats**

over 30yrs experience

021 0709101

100 Petley Rd, Paparooa

R & D MACDONALD COMPUTERS

Call Ross with your computer problems & repairs
He'll even build a computer to your specifications



Ph 09 431 6221

email: ross@paradisebreeder.co.nz

Elva's school days revisited

Elva Heath spoke to Joy Bonham about her schooldays in the late 1920s through 1930s. Getting children safely to and from school can present a challenge to many parents, but for the Leaf family it was even more complicated!

We, the Leaf family lived three miles from the Matakohe School, so when I, the eldest, turned five in 1929, it was arranged for me to stay with my grandparents Mr and Mrs Harold Flower during each term.

They lived only one mile from the school at Maungaturoto. There were more than half-a-dozen other children along that mile to walk with for company and there was no transport available in those days.

When I was seven I was allowed to live back home at 'Brierley Hill' on Ararua Road, Matakohe, from where I walked alone the three miles to Matakohe School for the next year.

By the time I was eight, Dad (Norman Leaf) bought a quiet horse for me to join the other children who rode to school. These included Coreen, Shirley



Elva and sister Ailsa on horse with brother Ralph seated in front

and Des Coates and also the Wearmouth boys.

Monty Sterling, who owned a garage and workshop behind the Matakohe Store started a school bus service out to the west of the school as there were sufficient children to warrant the service. Jim and Coreen Patterson took over this service and the Patterson family continue to provide this valuable service to this day.

Other family names I recall were Erne, Peake, Miru, Rewa, Ball, Williams and Sterling.

In 1931 the Matakohe School roll exceeded 60 and by 1934, some of the small sole charge schools were closed. This was the start of consolidation and brought the Edmondson and Bell children from Oparakau to join us. Other changes to the



fluctuating roll were due to others like me who stayed for a time with relatives, and then moved back home or moved further on. This made life interesting but in later years I would often wonder who they were and where they went.

I was one of eight children in Std 1, but my mates gradually disappeared and I reached Std 6 alone! For my family, secondary education presented a problem, the options being either to board in town or do correspondence.

I chose the latter until 1939 when Maungaturoto was consolidated into a District High School with a secondary component. I was a foundation pupil and reached School Certificate and University Entrance levels.

Nearly 30 years later Maungaturoto District High School was renamed Otamatea High School and four generations later my great grandchildren are pupils there!

Elva Heath



Monday-Friday: 8am-5pm
Saturday: 8am-12pm

2088 Paparooa Valley Road
09 431 8339

W: www.huband.co.nz
E: admin@huband.co.nz

Be in to win!

Spend \$50.00 or more in one visit at Huband Contractors Retail Yard and be in the draw to win a New Samsung 32" TV

Call or email us for any information or quotes for the following:

- Earthworks
- Drainage
- Site works, septic systems or water tanks
- Landscaping supplies
- Timber and fencing supplies



Drawn on 31st May 2018

Antiques Fair

Artisans & Antiques,
Collectibles Fair
Easter Saturday * March 31
Paparooa Hall * 9.30-3pm.
China, crystal, vintage linen,
books, chocolates, oils ...



Rhoda Morrison

Consistent Award Winning Salesperson

Achieving top results
for Clients!

09-431 6912
0274 800 691

rhoda@fnkaipara.co.nz
www.roperandjones.co.nz



Dargaville Realty Ltd, Licensed REAA 2008

Kaipara fire restriction lifted



As from 28 March Kaipara District has an open fire season status. Permits are no longer required, however care must still be taken. For full information go to www.checkitsalright.co.nz

Libby's Councillor Corner

With our new Mayor on board it's good to have a full Council again. We have plenty to do in the second half of our three-year term.

As a result of the recent mayoral by-election Jason Smith has been elected to replace Greg Gent who resigned late last year. Jason will continue until October 2019 in this role, when the next local government elections take place.

We are shortlisting for a new CEO, which is a critical position for the organisation, to bring to fruition the strategic and policy decisions of the Council.

The other main focus at the moment is consultation on **Council's Long Term Plan**. Public consultation times and places across the district are being finalised and advertised.

- Maungaturoto 29 March
- Paparoa Market 24 March
- Kaiwaka 14 March.

Times and venues will be on the KDC website, local Facebook pages or get in touch directly with myself - 021 208 0093 to

confirm. We really do want to know what you think, so please try to get along to one of the sessions. Submissions close 8 April 2018.

Throughout the year various funding is made available through Council to support groups in their work in our communities. Currently the **Creative Communities Scheme**, with funding from Creative NZ, is open for applications. This is to support communities to be involved in local arts activities. Criteria need to be one or more of the following:

- to increase access and participation;
- to support the diverse artistic, cultural traditions of local communities;
- or enable young people under 18 to engage with & to participate in the arts.

Councillor Libby Jones

OCS March news

Your Community House is in full swing for 2018.



Forty people enjoyed a beautiful seniors' lunch, a good turnout for the time of year. All had looked forward to the day and enjoyed catching up with friends and neighbours after the long break.

The Governance Board has met for the first time as have the staff and volunteers. Drawings are on display - in front of the beauty shop next to the Community House - which show our plans for the front of the House. Safer and easier access for everyone is the focus, while adding to improvements already made in town.

The mini-bus gets lots of use by various groups around the community. It's always

returned with a smile and comment such as what a pleasure it is to use and how grateful they are to have this service. The bus is used monthly (4th Wednesday) for a Whangarei shopping trip, leaving the House at 9.30am and returning around mid-afternoon, depending on where you'd like to go. Phone 431 9080 if you would like to join us.

Currently our Financial Mentors take people to WINZ for their appointments. We're planning to use the mini-bus for an 'appointment day' at the Whangarei WINZ office, and will advertise this when it's finalised.

Best wishes, the OCS team

FARMWORK SERVICES

For all types of fencing, stockyards, handyman work, tree felling, tractor work etc.



phone

Mike 09 431 6509
027 203 2694

email

farmwork.services@gmail.com

12 tonne digger now available for driveways, farm tracks, hole boring etc



4T-DIGGER – BOBCAT – TIP TRUCK

Property Maintenance – Driveways – Building Sites
Stump & Tree Removal – Hole Boring – Chain Trencher
Calf Shed and Stockyard Cleaning

KAIPARA – WHANGAREI – RODNEY

Phone Matt: 021 199 6677

Email: mprabrownecontractors@gmail.com



**NORTHLANDS BIGGEST
BED OUTLET STORE**



- **1/2 PRICE BEDS**
- **SECONDS-SAMPLES**
- **SLAT BEDS**
- **PILLOWS**
- **TOPPERS**
- **ADJUSTABLE BEDS**
- **BEDROOM FURNITURE**

**STOP BY AT THE WELL CAFE
(FORMERLY ELLE CEES) WHEN YOU COME.**

(09) 439 2243

18 Freyberg Road, Ruawai

TINOPAI SCHOOL PRINCIPAL RELEASE VACANCY

We are looking for a Principal Release Teacher for two days a week (days to be negotiated).

The position requires someone who is flexible, can use their initiative and is able to teach across Year 1 to Year 8, with individual learning programmes.

You will have a good understanding of Te Ao Māori with a willingness to learn Te Reo Māori.

Planning, assessment and reporting is shared in collaboration with the Principal.

Please email your CV (including references) to:
secretary@tinopaiprimary.school.nz

HOMEKILLS



WAYNE & ANNETTE

09 439 2020

Dry Aged Beef Specialists

Traditional Manuka wood smoked Bacon & Ham

No Retail

TOKA TOKA

Crompton Engineering Ltd

Phone/fax 09 439 2393
31 Jellicoe Road, Ruawai



Hay Racks
- covered
or uncovered

Palm Kernel
Trailers



website: cromptonengineering.co.nz
email: crompton.eng@xtra.co.nz



Three years for White Rock!

Another milestone in the life of our wonderful little gallery has been reached and our AGM was well supported with

20 members. I wonder how many other local organisations can top that? The incumbent committee was re-elected with the exception of Hanna Stevens who resigned after doing a great job as our PR/Advertising person. While we'll miss her in that role she remains a gallery member.

We are always ready to welcome newcomers, whether as full members or perhaps as a 'friend' of the gallery. The latter does not entail any fees and you do not have to be artistic but you may be available to assist by being on duty for a few hours at the gallery if other members are away ill or on holiday.

We're open seven days 10am-4pm so pop in and have a chat if this sounds like you. We are a friendly, fun group and would welcome you with open arms!

Our ideas for the coming year include several **specials** sales in coming months. If you have had your eye on a particular article for some time, keep your eyes and ears open - who knows - it may be in the sale. These will be well advertised.

We also hope to be successful in gaining further grants which will enable us to organise more creative workshops. These are open to anyone in the Kaipara area so if you're looking to improve your confidence in your artistic field, watch for these to be advertised during the year. We will also be organising a couple of fundraisers and hope we can depend on your support. The very successful 'Trash to Art' Competition is to be repeated later this year, so get those ideas into action now as the prizes are worth the effort.

So that's us for this month. Don't forget to visit - there are always new things to see!

Janice

Riverview news

Congratulations to Maungaturoto Resthome resident Adelaide Priebe who turned 100 on 30 January. Adelaide spent a wonderful day with her family (see story facing page).

Are you are full-time carer needing a break? Did you know we offer resthome level respite care for families and that there are no age limitations on who we provide care for. The friendly atmosphere in the resthome is a 'home away from home' with staff on duty 24/7. Respite care can be on a 'private fee paying' basis or you may be eligible for government assistance. For further information please contact us on (09) 431 8696. Construction of Stage 1 & 2 of the 14 bed dementia unit has begun. It can be stressful having a loved one cared for far away from home and once the project is completed we will be able to provide care within this community.

This is a huge project. Please give consideration as to how you may be able to help. Over the years many families have appreciated the benefits of the Maungaturoto Resthome. The fact is that there will be increasing numbers of our community requiring increased levels of care.

* A pledge pack can be obtained from the Rest Home manager 431 8696

* Direct donation to: Trust Development Fund ANZ Bank Account No. 06-0365-00014253-046 (Your name and phone no. in reference field).

* Tax rebates can be claimed on donations (Trust has donee status).

For more information contact Trustees:

Don McKay 431 8308,
Craig Fergus 021 378 483



Celebrating 100yrs in style

Adelaide Eunice Priebe (known as Eunice), resident at Maungaturoto Residential Care, turned 100yrs old on Jan 30. She was excited to receive birthday cards from Her Majesty Queen Elizabeth II, NZ PM Rt Hon Jacinda Ardern, Governor General Rt Hon Dame Patsy Reddy, Senior Affairs Hon Tracey Martin and Eunice's cousin's son Deputy Leader Hon Kelvin Davis.

She celebrated with family, at the home of daughter Pat George in Matakohe.

Born in 1918 in Kawakawa to Lance and Ada (Moewaka) Timperley, Eunice was the eldest of eight children who all grew up on the family farm at Ruapekapeka Pa. Her grandfather was Hira (Kepa) & Hemi Neri II. Eunice's hapu is Ngāti Manu and iwi Ngāpuhi. As a child she would ride with her mother on the front of her mother's horse to bring food and supplies to her father, a bushman working beside the



famous Northland bullock trains bringing out the mighty kauri trees from the bush. In the late 1930's Eunice married Murray Priebe, and had three children, Paul, Patricia (Pat) and Michael (Mike). In 2012 they celebrated their 70th Wedding Anniversary and were to enjoy another three years together before Murray's death in 2016 at the age of 96.

Eunice was a very savvy businesswoman over the whole of her working life. - from a boutique in Kawakawa, to the Unisex barber shop in Kawakawa, then a milk bar & fruit shop in Warkworth

and a hair salon in Hikurangi. Settling in the Bay of Plenty over the next 50 years, Eunice owned three hair salons and two children's clothing stores. In 'retirement' they bought a kiwi fruit farm in Te Puke from where they loved trout fishing and spent many family holidays at their kiwi bach at lake Rotoma. In later years they finally returned North again, settling in Maungaturoto to be near their daughter Pat.

Eunice loved to travel, and on applying for a passport, was shocked to discover her birth certificate showed she had been celebrating her birthday 2 days early all her life! She travelled the world: from Hawaii, through Europe, often accompanied by her sister and best friend Betty. With Pat in England and Mike in Australia, Eunice kept travelling right up until her late 80's.

In 100 years, Eunice has seen many changes: from the arrival of the telephone in Northland homes, to 'skyping' with her granddaughter Sarah-Jane in the USA. As a small child she survived the last great pandemic, when she



contracted Spanish flu. She's seen women in NZ become elected to parliament for the first time in NZ history, to having now seen three female prime ministers in her lifetime. She's lived a full life with a wonderful and large family. She's been lucky in health, strong in will and body, and in all those years has lost only her sense of smell and a bit of her sight. Eunice celebrated her 100th birthday with a gold-leaf covered chocolate and red velvet cake made by Tatiana, local chocolatier.

Sarah-Jane George

The Glass Guy



Phone Colin
09 431 6595

PLUMBER

Kaiwaka to Ruawai

- 30 years' experience
- All plumbing services including new housing and maintenance



ANDREW KENNY
ph 027 642 8320

Paparoa Store

Proudly Supporting Paparoa

OPEN 7 DAYS

Monday-Saturday 7am-6pm, Sunday 9am-5pm



We stock a great selection of CONFECTIONERY, ORGANIC, DELI, MEAT, FRUIT, VEGES, FROZEN GOODS, BEER, WINE and a wide range of grocery items at excellent prices

DVD's \$1 to \$8 per night

EFTPOS NZ HERALD POST CENTRE

Phone / Fax 431-7320

Cnr. Franklin Road and State Highway 12

FENCING SPECIALISTS

CALL CHRIS HICKEY ON 027 561 1719 email: fencingspecialists.nz@gmail.com



ALL ASPECTS OF FARM & LIFESTYLE BLOCK FENCING & MAINTENANCE INCLUDING:

- Post & Batten • Entrances
- Post & Rail • Retaining Walls
- Stock Yards • Riparian Lots
- Netting • Subdivision

Saving Bruce

Every summer we (Jan and Steve Tapp) head out in our boat onto the Kaipara Harbour for a holiday of swimming, fishing, netting and enjoying the harbour and its inhabitants.

One of our favourite places is the "Spit" - a creek at the southern end of Taporā. From our cockpit we noticed a pair of banded rails trying to organise their chicks to cross the creek. The banded rail is a rarely seen salt-marsh bird which looks like a weka but is much smaller and their numbers are in decline.



Two chicks were left behind in the water and we helped them back up the oyster bank to be closer to the mother. Sometime later one of the tiny chicks came drifting back up the creek distressed and crying (a very loud peeping sound) - with no sign of the parents.

Because the huge high tide that night would cover the entire bank, we decided to try to save this little fellow. Not much than the size of a matchbox, we named him Bruce (a manly name ... Fluffy was suggested but it didn't go down well with the captain).

Steve gathered up this gorgeous wee ball of fluff and we looked after him for two nights, feeding him droplets of water, crushed pippis and apple sauce. He would stop crying when cuddled by several surrogate parents on board and spent his day wandering round our boat, being admired by neighbouring crews.

Once back on shore we headed to Whangarei to the Native Bird Recovery Centre in Whangarei where Robert Webb, the founder of this voluntary group, immediately popped Bruce in his pocket to keep him warm. This group does amazing work for all native birds, and rescues more than 1200 each year. It was a sad moment as we said goodbye to Bruce but we left him in good hands and gave a donation for his keep.

We have always had an interest in the birds around our area and have made an effort to rid our farm of pests - setting possum, wild cat and mustelid traps. In the last year we've caught 13 weasels, numerous possums and the odd wild cat.

We have a wonderful variety of birds in New Zealand and hopefully our trapping regime will help to protect our corner of God Zone.

Jan Tapp, Matakōhe

Help! Weeds taking over!

VILLAGE WORKING BEE SATURDAY 17th MARCH.

Has anyone else noticed the way the weeds have overtaken our beloved village recently, how untidy and unloved it appears?

With the amazing hot and wet summer of growth in our gardens, it has also been an invitation for the grass and weeds to seize the opportunity for a takeover of all that was previously tidy and attractive.

You may remember some of the hard work by volunteers which went into transforming the riverbank through the village with hundreds of native plants? Unfortunately if something is not done immediately, those very same plants will be choked by the morning glory vine and other invasive species.



In order to prevent this we are appealing to all of you who have pride and love for this wonderful area we live in, to donate a few hours of your time to alleviate the problem. As well, if you are new to the

area I'm sure you would find this an ideal opportunity to meet other residents.

A working bee will be held on Saturday 17th March at 1pm; meet at The Landing, bring plenty to drink, a snack, a hat and gloves if you have them.

If you prefer to work in your own time, we can meet to allocate a place for you to care for. There are several garden areas throughout the village which would show their true colours with a bit more TLC.

So come on folks, let's show the rest of Kaipara what Paparōa is capable of.

REMEMBER THE OLD ADAGE 'Many hands make light work' and 'Good works make light hearts.'

Janice 021 028 209 69 or
Jacque 021 488 822.



first national
REAL ESTATE

Roper & Jones

Your award winning local Real Estate Team

Covering the Kaipara with Sales and Property Management

first national foundation Proudly supporting National Burn Centre

We put you first



RACHAEL DEVRIES RHODA MORRISON KARYN HODGSON ANDREA CLARKE TONY NORTHCOTT CRAIG CLEMENT GARY MORRIS SHEILA BOON MICHELLE TOHLINSON JILL WILSON JOHN POWELL SHAR DORMER ADRIANNE ASTLEY

110 Victoria Street, Dargaville
143 Hurndall Street, Maungaturoto

www.roperandjones.co.nz

09 439 7295
09 431 1016

Dargaville Realty Ltd
Licensed Agent
REAA 2008

HEY, KIDS ... JUST FOR YOU!

Get crafty for Easter

There are hundreds of Easter art and craft activities on *Pinterest* to keep you busy. Here are a couple of simple ones we thought you might like as they are great as decorations and to play with.

Hatching Chicks

You need:

- ✂ Coloured paper egg shapes
- ✂ Yellow paper chick shapes
- ✂ Glue, stickers, crayons
- ✂ Googly eyes, scissors, split pins

1. Cut the eggs in half with a zigzag cut. Colour, and decorate them with stickers.
2. Pin the halves together on one side with a split pin so you can open and close the egg.
3. Glue a googly eye on to the chick then glue the chick on to the back of the bottom half of the egg.



Easter Craft Stick Puppets

What you need

- ✂ Craft (ice block) sticks
- ✂ Yellow & white pipe cleaners
- ✂ Yellow & white construction paper
- ✂ Googly eyes
- ✂ Markers, scissors, glue
- ✂ Yellow & white paint

1. Start by colouring the craft sticks and let them dry.
2. Cut the round head shapes - yellow construction paper for the chick and a white circle with ears for bunny.
3. Draw (or glue) the beak, nose and ears. Stick on a pair of googly eyes (or draw them).
4. Once the paint on craft stick is dry, place it at the centre of the pipe cleaner. Start wrapping the pipe cleaners around them, twisting them on the back side of the craft stick, to make them more secure - you could also add a dab of glue.
5. When you're half way through, make the wings by making the loop, as shown on the image above, twisting it a few times at the bottom of the loop (near the craft stick). Continue wrapping the pipe cleaner until used up, or cut it if it's too long. Tuck the loose end under the wrapped pipe cleaner (a dab of glue may help). Stick on the head (glue stick is perfect) and you have your Easter craft stick puppets.

PP

Otamatea Repertory Theatre

One Act plays season 13-15 April

Otamatea Repertory Theatre is facilitating a weekend festival with four contrasting plays on show - something for everyone!

'The Argument' - written and directed by George Skelton.

Playwright George Skelton has written a full-length play, 'The Strange Attraction', based on the novel by Jane Mander. 'The Argument' is a segment of this, a 'trailer' for what is yet to come and is a dramatic portrayal of intense discussion relevant to the social standards of the time between the three main characters. In 1922 this novel was censored, and could only be read by women over 25 and only in a library. Copies of the book may be purchased at the Theatre.

'I Never Saw Another Butterfly' - written by Celeste Raspanti and directed by Brittany Dyer.

Based on the poem 'The Butterfly' written by Pavel Friedmann in Theresienstadt Concentration Camp 1942. It is set in a Jewish Ghetto. It is a beautiful and moving piece based on the lives and hardships of children in the Second World War.

'The New Wing at Elsinore' - written by St John Hankin, directed by Sue Skelton. A short, amusing sequel to 'Hamlet', in which there are complications when his friend later buys and builds additions onto the famous castle.

'Trash and Treasure' - written and directed by Maura Flower. Two sisters are having a garage sale to clear the last of their mother's belongings. Things are not always what they seem - it's a whimsical exploration of the adage that 'one man's trash is another man's treasure!'

We hope to see you there. Details in advert below.

OTAMATEA REPERTORY THEATRE
PRESENTS

A
FESTIVAL
OF
**ONE
ACT
PLAYS**

FOUR LOCALLY PRODUCED PLAYS

FRI 13 APR @ 7.30PM
SAT 14 APR @ 2PM
SUN 15 APR @ 2PM

ADULTS \$28 STUDENTS \$15

TICKETS AVAILABLE FROM
WWW.ORT.ORG.NZ

OR
TONYS LOTTO SHOP, MAUNGATUROTO

Find us on
facebook.

Family Start

Phone : 09 4391826

Office Hours 8:30—5:00pm Mon-Fri

52 Murdoch Crescent, Dargaville, Northland
6/8 Kaiwaka / Mangawhai Road, Kaiwaka



Free In-Home Parent Education Service

Call us for an appointment to discuss the criteria.

No Obligation.

All nationalities welcome.

"The measure of us as Parents, is revealed in our growing children"

Keith the TV Guy
Freeview digital TV



20 TV and 9 Radio/Music channels are currently being transmitted.

Satellite dishes, decoders, cable etc., supplied and installed.

09 431 7143
or 021 239 4251



Summer at School

It's been great getting back into our school routine with a very busy February.

We continue to work on PB4L (Positive Behaviour for Learning) and after surveying parents, students, and our community, we have identified three values that will be at the core of all that we do - '**Resilience, Respect, and Responsibility**'.

All students (and teachers) have been put into four houses which are vertically grouped - Kauri (Green), Kowhai (Yellow), Pohutukawa (Red), and Totara (Blue), named for trees which are found in the school grounds. Children earn tokens for their house through demonstrating our **values**. We also have a PIPI (Pride In Paparoa Incentive) award that the children earn for displaying our **values** in the playground. Our House teams also allow our senior students to develop leadership skills, as well as strengthening bonds throughout the school.

We continue to develop our **Enviroschools programme** as we work towards achieving bronze status by the end of the year. Each Monday afternoon all classes are involved in a range of environmental activities either in class or house groups. We would



welcome support from our wider community to help with our Enviroschools programme. Please contact Julie Harper jharper@paparoa.school.nz if you are interested.

Every Thursday afternoon we run house sports/games which are proving to be a lot of fun. We're also pleased to be working with Kirsty Hamlin from Water Skills for Life, and Clark from Sport Northland. Room 1 have been learning



how to play **Ki O Rahi** with Clark and are looking forward to participating in a tournament on March 1.

School swimming sports will be held on March 8 and some students will represent us at Bream Bay Interschool Swimming Sports March 15..

Julie Harper

Birt & Currie Surveyors Ltd



Local Phone 09 280-9591

Timely, friendly & personal service

info@landsurveyors.co.nz
www.landsurveyors.co.nz
PO Box 120 Paparoa 0543

PAINTING

Building
Gib Stopping

- Alterations
 - Maintenance
 - Interior & Exterior
- anything considered

CAN WE FIX IT? YES WE CAN

PATRICK JOHANSON, FISHER ST, PAHI
021 154 5679 09 431 6020

Day Camp 2018



Hey, all you mums and dads with children aged 6-12 years - look at the April holidays on the calendar. To be more specific mark 18-20 April - yes, these are the dates chosen by the organising committee for this year's Otamatea Day Camp.

Hang on, I can hear some voices asking what is this person on about? Let me fill you in ...

Day Camp is run by the local Ararua, Paparoa and Maungaturoto churches and is supported by other churches, groups and businesses. It's three days of outdoor fun; building bush huts, singing new songs and learning some tips for life God's way, cooking sausages over real campfires, enjoying other activities ranging from horse riding, go-karting, arts and crafts, dam building and archery. Your children are bussed in each morning and returned in the afternoon. You're invited out on the last day to see what they've been up to, partake of a bbq snack (don't worry the children don't cook for you) and take them home again, tired but buzzing.

If this sounds like something your children would like to be involved in then watch out for registration forms closer to the date. They'll be available through your local school, the churches mentioned, Skelton's Paparoa, and 100% Electrical at Maungaturoto. If you're an adult out there thinking this sounds like something you would like to be involved in then

contact: Philip Leaf 431 6622, Paul Chambers 431 9042, Ruth Rosser 431 8491 or Debbie Blythen 431 6892.



Battensby Brothers Contracting Limited

GLENN & ROSS BATTENSBY
021 983 734 / 021 983 594
(09) 431 6186
battensbybrothers@xtra.co.nz
PO Box 21, Paparoa 0543

www.battensbybrothers.com

Ground Cultivation, Silage and Hay, Fertiliser and Muck Spreading
Fencing and Firewood (WINZ)

Books @ Ruawai

5 Freyberg Rd, Ruawai

Selling secondhand books and music

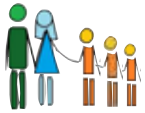
Open: Monday Tuesday 9-12 noon
Wednesday Thursday Friday 2-4pm
Now open every Saturday 10am-1pm

Books at Ruawai is now on Facebook. Please like us!



Ph 09 439 2044
027 200 5653
or 022 073 9752





From our family to yours Breaking silence

Every family has its traumas, its dramas, its events you'd rather forget. Once we begin the process of making and birthing babies, sometimes things don't go to plan. The more we speak about these uncomfortable events- the miscarriages, the still births and the losses - it helps us to release this old pain from the body.

But breaking the silence around some taboo subjects can take great strength. It's not a conversation for outside the dairy, perhaps with a casual acquaintance, but it's an important talk to have with someone you trust. These conversations aren't easy.

Topics like suicide and sexual abuse are highly triggering for most of us in some capacity, but courageously, if we can start to talk openly about how affected we all are and see common traumas, this can start to enable a collective healing.

As some of you know I have pulled back from all my yoga classes as I am pregnant. This pregnancy has triggered the heartbreak of losing my last baby at 20 weeks, something I am comfortable to talk about

openly in a publication like this, because I know many women have been through it.

Taking the courage to speak openly about loss and needing to take time to nurture myself, will I hope, encourage other mothers to look into their shadows and voice the long-past hurts, or to feel empathy with such a loss, because we never know what people are privately having to deal with.

The old days of hiding pain, putting on a brave face, and pretending everything is ok are over.

We are all on this Earth together, in the great waka together, and no one needs to face the shadows alone. Reach out and speak out.

Jenny

0800 LIFELINE is a free, confidential service.

Kaipara Hunting & Fishing

We held our 'Pre-Parry' Claybird Shoot at Cam's Farm on Sunday February 11. Rain was forecast and accordingly it came down all morning but the 14 men and 2 ladies present braved it out. In the wet, hot and humid conditions there was a good contest between shooters over the 80 targets with many scores in the 60's. Winners on the day were:

Men: Paul Dunnnett - 73

Dale Hamlin - 67

Dylan Thompson - 64

Ladies: Lyn Needham - 59; Bryony- 24

Thanks to our club members who set the course on Sunday (in the rain), the clean up team at the end of the shoot, and all other helpers on the day that made this event run smoothly.

FISHING LEADER BOARD

Senior: Snapper - Jenny McLean (5.60kg)

Kingfish - Andy Thompson (15.89kg)

Kahawai - Jenny McLean (2.40kg)

Gamefish - Striped Marlin Andy Thompson (102.30kg)

Junior: Kingfish - Bronson Wrathall (10.40kg 90cm)

Bronson caught this kingfish in the Northern Wairoa River and it had been previously tagged. We then found out that it was originally caught by a land-based fly fisherman in the Manukau Harbour on March 31, 2017 measuring 83cm.



DUCK SHOOTERS SHOOT: SUNDAY APRIL 8, 8am.

Cost: \$50 seniors / juniors free

Where: Club House, Cam's farm, Hames Road.

Prizes: 1st, 2nd & 3rd, Seniors, Ladies & Juniors. Plus there will be drawn prizes and the

MAJOR DUCK HUNTER'S PRIZE DRAW IN EXCESS OF \$700.



Supershuttle
PASSENGER TRANSPORT SYSTEM

Nationwide 24hr service
To and from airports
Fixed fares
Door to door
Single and group bookings

Call Owen 021 368 595



SURPRISING
FLAVOURS

The Thirsty Tui



FRESH
INGREDIENTS

Karaoke
Competition \$800!!



*...or just
come along
and enjoy
the fun!*

**PRIZE
PACKAGE**

Semi Finals
3 March 8pm
11 March 4pm

Grand Final
31 March 8pm

- PRIZES FROM -

Empire • Kauri Coast Seafoods • Skeltons Paparoa Drapery • Maunguturoto Butcher
Grey Lynn Butcher • Hunting & Fishing • The Thirsty Tui

• PAPAROA HOTEL •

SHUTTLE AVAILABLE - (09) 431 7359



Medical Matters: Eating, Drinking & Smoking



And the greatest of these is??

Well I think many might immediately say - **smoking**. "It's a filthy and smelly habit and what a huge burden it is on the state in terms of health care"! **Drinking** not so much- although many of us like a drink and are happy to go to a bar or a pub where people are happily swigging on beer or wine, or a g'n't or 'scotch on the rocks'.

But **eating**? We ALL like to eat. We all need to eat. The sight or smell of someone eating does not offend us, be it a huge fat-loaded hamburger and chips or a cappuccino plus a great big slab of chocolate cake and lashings of cream.

But from a health perspective (and obviously as a doctor I write from a health perspective) is there any real difference between that cigarette or that beer or that great big slab of chocolate cake? NO?

Actually, maybe YES! Maybe that huge sugar and fat laden cake is doing more harm than a cigarette or a beer.

Over the years governments around the world have made a massive effort to curtail smoking, and to a lesser extent, drinking, by taxing it out of most peoples' reach. Education in schools and even

pre-schools has been greatly effective. Drunk-driving ads on TV have made a huge impact and this is really good. Both take a toll on lives and a large chunk of the Health Budget.

But I'm sad to say, I see no significant effort to curtail the consumption of 'bad' food - unhealthy food, nor to promote the sales of good healthy food. The so called 'sugar tax' is a joke. Why is it that I can buy a big slab of chocolate cake for less than the price of a cauliflower? Or a cheese burger and chips for 1 cent more than the cost of a cauliflower?

If you are hungry and have exactly \$6 left of your benefit are you going to buy the cheese burger and chips - or the cauliflower? Hmmm. Right now, I could buy a sausage roll and a coke for the price of a broccoli.

What to do? What to do?

Come on people! Obesity, with all its attendant health problems, is a huge health issue; likely the biggest of the three. Diabetes, and everything that goes with it, heart disease and stroke, arthritis, bowel and breast cancer. It affects us all in many many ways.

Please, if you are at all health



conscious and want the best for your family and loved ones, lobby the government to hike the taxes on crud food and use the taxes to subsidise the good food. But don't hold your breath... I have yet to see the tax hikes on alcohol and tobacco go towards making healthy food more accessible.

Dr Lynne



Brain and behaviour

Workshop for parents and caregivers

The brain is a complex organ. Modern technological advances in research has made it much easier to study the brain. We now know that 90% of brain activity is unconscious, so though it feels that we are in control of our brain, modern science suggests we have little control.

The concept of Neuroplasticity is a new and exciting area of research. It highlights that our brain is constantly shaped by our experience and our thoughts.

Through neuroscience, our understanding is changing the way we view behaviour. In our workshop we will explore how to help our children learn more positive behaviours and how to cope with regular life stressors.

Join Branka and Therese at Paparoa School
March 20th, 2018, 6:30 to 8 p.m.

Ministry of Education psychologist, Branka Vasilic offers a free workshop to Paparoa school community. This is currently open to a limited number of schools in Tai Tokerau.

YOUR TYRE SPECIALIST

Providing 59 years of service in the heart of Kaipara.

- Tyres
- Brakes
- Wheel Balancing
- WOF
- Suspension
- Servicing
- Alignment
- Batteries

Garnetts Tyre Service

📍 2 Gorge Rd, Maungaturoto
☎ 09 431 8255



M.K. Weber Sawmiller

CONTACT Marek by phone or drop into the mill
94 Tinopai Road, 09 431 7170

WE SELL:

- Pointed Electric Fence Battens
- 1st & 2nd Grade Fence Battens
- Retaining Wall Timber
- Weather Boarding
- Rough Sawn, Gauged & Dressed Timber
- Private Milling Undertaken



Timber cut to ANY size to suit your order

Pioneer Luncheon

Paparoa Lions are looking forward to hosting the 71st annual Pioneer Luncheon on Friday March 16. Originally started to honour pioneering families of the district, this event now includes any senior citizen who resides in the district or has lived or worked in the area in the past. Guests often travel from as far afield as Tauranga, Tokoroa and Kerikeri, and it is a great opportunity for past members of the community to catch up with those still here.

Invitations have been sent out but we are always keen to add to our invitation list, so if you know of anyone who would like to be included please call Pete Hames 431 6822.



Letters from The Old Post Office

On songs of praise

Listening to the constant patter of raindrops, watching the swirl of muddy river water swamping the lower paddock and feeling the rising soggy damp through the wooden floorboards reminded me forcibly of the new mantra of Today. The art of Being Mindful.

Bearing this important new lesson in mind (there was barely any room as most of the brain cells were concentrating on being mindful, of course) I trotted out to the shed in order to bring this important message to the (quite grumpy) man in the shed. The man trying to get the glue to set, the metal to dry and to inhibit the drops of sweat pearling the car's new surface. Sometime after my appearance he realised there was a purpose to my visit. I was not there merely to gaze in wonder at his manly physique, his Adonis-like visage, but to speak. Yea, even to communicate. Grunting in a questioning like manner (he is quite clever like that) he indicated that one could proceed.

I proceeded

I nattered on about living in the moment, about being aware of one's immediate surroundings, the concrete (damp) beneath the feet, the drops of moisture from the shed roof, the rainbows of colours gleaming from the oily sheen on the windscreen ... in short, I exhorted him to **BE** in the moment. Shortly, I retired from his near vicinity and decided to be beautifully mindful of his imminent departure on a three day fishing trip. I plan on focussing on every delightful moment, to relish the dog and cat's quietly supportive company, the chooks happy chortling as they are fed. I will be mindful of every moment.

Just like they say one should. Praise be.

Deb



Paparoa Community Library

Library closed 13-14 March



Kaipara District Council is replacing its computer system and this will also affect the Paparoa Community Library. To enable a smooth changeover, the Library will be closed on 13th and 14th March. Our apologies to members for any inconvenience this may cause.

Linking Hands 10 years on

The communities of Maungaturoto, Ruakaka, Waipu, Mangawhai, and Kaiwaka will soon celebrate a proud achievement.

For 10 years they've managed to make sure no-one in their communities missed out on important medical treatment because of a need for transport.

They've distinguished themselves by supplying volunteer drivers, admin staff, and with donations they've kept the Linking Hands service flourishing since 2008.

Linking Hands started out as a resource centre connecting people with those who could help. After five years they were offered a shuttle van which enabled them to link patients and medical services and the

health shuttle service we know today was born.

We invite you to join the 10 years celebration on March 17 in the St John Hall, Maungaturoto from 2 to 4pm for a memorable afternoon tea and juicy tidbits of history.

Email to linkinghandsmain@gmail.com by March 10 for catering purposes - although it's not a condition to attend!

'Like' Linking Hands Inc. on Facebook, or support us by visiting linkinghands.co.nz and help to pave the way for another 10 successful years.

Andre Van den Berg



LATTO

BUILDERS

021 7727 66

House Construction, Alterations
Renovations or General Repairs



SURPRISING FLAVOURS

FRESH INGREDIENTS



- MARCH SPECIAL -

Ice-Cream Sundae

FREE

WITH EVERY KIDS MEAL

MADE WITH EXTRA YUMMY HOME-MADE CHOCOLATE SAUCE!

• PAPAROA HOTEL •

see menu - www.paparoahotel.nz - (09) 431 7359

Kōrero Māori - give it a go Nguhuru

Well summer (**raumati**) is nearly at an end, days (**ngā rā**) are already getting shorter, school (**kura**) has started back, and the work (**mahi**) of harvest and study (**ako**) has begun.

Here are some new words (**kupu hou**) to mark the season:

Autumn/Harvest: **Nguhuru**

Weather: **Huarere**

Rain: **Ua**

Wind: **Hau** (Nga Hau e wha = the four winds)

Pumpkin: **Paukena**

Potatoes: **Riwai/Taewa**

Onions: **Aniana**

Leeks: **Riki**

Apples- **Āporo**

Leaf/Leaves: **Rau**

Book: **Pukapuka**

Student(s): **Tauira**



Want to know more about local history and to learn te Reo Māori?

Adult evening classes resume at Otamatea High School Tuesday, March 6 at 5:30pm.

Please contact local kaiako (teachers) for further information and enrolment details.

Thomaseena Paul stp@otamatea.school.nz or

Reno Skipper matuareno@gmail.com

Kōrero Māori - It's fun - give it a go!

Science Corner

Algae - Nostoc

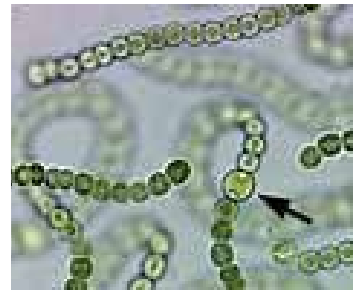
That horrible slippery black stuff that grows on our footpaths and driveways is known as nostoc, a type of blue-green algae. It seems to appear mostly where the ground has been sprayed with glyphosate weed killer (interestingly my organic neighbour has none growing on his driveway). It dries out to a seaweed-like crispy black substance



in the sun yet quickly turns back into a swollen black/green jelly-like plant in the rain.

Nostoc is an ancient plant that grows just about anywhere in the world – even on the edges of volcanoes. There are many types – some edible – it is eaten in the Philippines, Japan and Taiwan and it is thought that the manna mentioned in the bible was a type of Nostoc as it can appear in large amounts overnight. I don't think our type is edible and may even be toxic.

If you have a microscope it is fascinating to view as you can see the twisting chains of cells with their chlorophyll. Nostoc does not have chloroplasts but photosynthetic pigments and it also fixes nitrogen from the air so does not require nitrogen in the soil. It can use long and short wave ultraviolet light and can grow where radiation is high. It can survive freezing, high temperatures and acidic rock.



So how to get rid of it and make your pathways safe to walk on?

I have found that spraying with baking soda (sodium bicarbonate) and water seems to work and turned the algae from black to brown. I read on the internet that washing soda (sodium carbonate) and water also works. These are non-toxic chemicals and easy to get hold of. I am not sure of the best concentration - but I'm trying 2 tablespoons baking soda/litre water.

I'll let you know next month if it works!

Stella

Need a Shed?



- Timber and steel buildings any size
- We do plans and engineers designs for council
- Farm sheds
- Commercial buildings
- Feed pad shelters
- Goat/Chicken sheds
- Horse stables
- Lifestyle sheds
- Excavation, driveways and concrete floors

Your local builder: Andre Nicolai 021 202 9854

Pets in the Valley



Wow, it does feel like we are living in the tropics lately!

The gardens and farms are doing very well because of it, but also some diseases love this weather.

This time of year is the worst for allergic dogs we see lots of skin and ear problems and with the high humidity many bacteria have amazingly quick generation intervals and multiply rapidly. So skin that was ok one day can be a red raw mess two days later.

Watch your sheep for fly strike - even those shorn recently can be struck rapidly. Again, just one day, and animals can be in trouble.

Those with alpacas need to be aware; these animals can be very susceptible to facial eczema.

As we are having such fantastic grass growth, dead matter in the base of the pasture is going to be an issue in future grazing rounds. This is where the toxic facial eczema spores live and numbers will be high this year. Of course eczema also affects sheep and cattle so if you're not sure how to manage it talk to your vet - prevention is everything with this debilitating disease.

Otherwise enjoy the rest of summer!

Janine



Horse trek

Despite heavy rain the Rotary horse trek went ahead in February as planned.



A small group of intrepid riders, some from north of Dargaville, set out in wet weather gear, across the Huarau farmland and away up to the trig.

All enjoyed the ride, which was followed by an excellent lunch in an old cowshed. Everyone promised to return next year when hopefully the weather will be finer!

Tennis Coaching



There will be professional coaching on Tuesday 6th March. with Grant van Dalsum - at 4.30pm for Primary age group; 5.15 to 6.15pm for High School age and interested adults. The Club has fundraised for this session keeping the cost per person at just \$2.

Newcomers are welcome and membership is affordable, so come along and have a go! There are some racquets available for use.

Tennis is held Tuesdays 5-6pm for Juniors (High School and Primary age). Adults Friday mornings 9.30am and Tuesday evenings from 6pm.

Enquiries: Sue 431-6224 or Pete 431-6822

Autumn comes to the garden

It's sure been a different summer this season with lots of hot weather, storms and plenty of humidity.

The tomatoes have been enjoying the extra heat and as long as those nasty green stink beetles are kept at bay we should continue to get a good harvest. It was great to see the huge display of vegetables at the Paparoa Show including probably the largest carrots you would see anywhere. The two young boys from Paparoa Primary School who helped out in the hall on Friday before the show learnt that you can have yellow and purple carrots! It is great to have these young people helping. Unfortunately the under-16 cup for the 'best vegetable collection' was not contested as no young people entered this class.

Out in the garden dwarf beans can still be planted to give a reasonable crop before winter. Other plants to grow now are winter vegetables like broccoli, cauliflower and all year round vegetables like beetroot, leeks and carrots. As white butterfly caterpillar is a major problem for the cabbage family nearly all year round, seedlings need protection with a net, or checking daily for eggs and small caterpillars. Derris dust works but must be reapplied regularly.

Sweet peas can be planted now along with poppy, primula, stock, pansy and snapdragon seedlings. Lobelia is also a good option. Choose your winter/spring bulbs this month and remember tulips and daffodils benefit from chilling in the refrigerator for up to 6 weeks before planting. Anemones are worth planting as they always make a great show.

It's also time to fertilise citrus trees as they need plenty of food. Some people have great success with putting their grass clippings around the base, but keep them away from the tree trunk. Golden Queen peaches should be ready for picking and will benefit from pruning as soon as they have finished rather than waiting for the winter months.

I'm enjoying the penstemons flowering at my place with so many different colours. The blue one has naturalised and competes with the couch grass but still makes a nice show.

Enjoy your garden even if you can only work early morning and evening when it's too hot and humid during the day!

Stella



LANCE KEAY CONTRACTING LTD

- Effluent Pond Cleaning
- Round Bale Hay & Silage
- Ripping & Discing
- Power Harrow & Air Seeder
- Under Sowing
- Gorse/Scrub Mulching
- Conventional Baling

Ph: 09 431 6308
E: lancekeaycontracting@farmside.co.nz

PH: 021 383 908



Kaipara Cleaning Co.

Tim & Sharlene Lord

- Pest Control
- Carpets & Upholstery
- Interior and Exterior Home Cleaning

e-mail - kaiparacleaningco@farmside.co.nz
Facebook - www.facebook.com/kaiparacleaningco

Phone 021 114 6729

www.kaiparacleaningco.co.nz

g.a.s. Paparoa

**Open 7 days
Mon-Sun 6am - 10pm**

- Petrol, Diesel & Oil
- Fresha Valley milk \$3.50 2L
- 2 litre icecream
- Great variety of Bait and all fishing requirements
- Great variety of snacks
- Pet food - including dog rolls
- AdBlue
- Top ups and prepay
- Bosch batteries
- Hardware
- Firewood







g.a.s - Lucky & Jagjeet 09 431 6302

HOOK, LINE & SINKER

Fishing is very good at the moment with heaps of snapper, a few gurnard but no kahawai. The best fishing is in the harbour with small boats doing very well, up to the funnel.

Happy fishing



OUT & ABOUT AROUND THE TOWN

Last year PPI made a submission on behalf of Paparoa for a "pram crossing" at the footpath across the entrance to White Rock Gallery and Paparoa Library (and the Medical Centre to be). KDC has now completed this.

Kaipara Yoga with Jenny has been discontinued for the foreseeable future but you can keep up your practice with Annie's sessions on Monday evenings 6pm at

Maungaturoto Centennial Hall. Plus, Thursday morning yoga is coming soon either in Paparoa or Maungaturoto. Contact Annie 027 427 2644.

The friendly and enthusiastic new owners at the former Cruiser have moved in and are renovating the premises There are great plans to open a good 'family affordable' restaurant in the near future.

Order your firewood from the Lions now to be sure of your

winter supply. Call Stephen Findlay 431 6148.

Hubands promotion to win a new Samsung 32" TV is extended until the end of May. Be in to win! Simply spend a minimum of \$50 in one visit to their retail yard and you will be in the draw (see advert pg 6).

Have you called into Books at Ruawai? It's an amazing treasure trove. They're open 6 days - see open hours in their advert page 2, and look them up on facebook for more!

Did you know Gaye at Colour & Cutz has been in her new premises for a whole year. What a great location and she's loving it!

Annual General Meeting Anglican Church Paparoa Mission District

Sunday 25 March 2018
11am

in the Footprints Room
Holy Trinity Church,
Hurdall St
Maungaturoto
S. Skelton, Secretary

Karaoke, icecream & birds!

The Thirsty Tui Paparoa Hotel has lots going on! There's a great offer in March - all kids' meals come with a **free ice cream sundae** with our very own chocolate sauce. Yum!

Also our popular **colouring competition** is back! This time you choose a conservation charity (Save the Whales, Save the Kaipara Tern or Save the Kauri Bush) and the

winning entries get a \$20 dining voucher plus \$50 will be donated to your chosen charity. Enter as many times as you like! Kids, bring your parents in and start colouring or simply pop in and pick up a copy.

The **Karaoke competition** is back with \$800 in prizes. There will be two heats - Saturday 3 March 8:30pm and a family-friendly afternoon on Sunday 11 March 4pm - followed by an awesome **Grand Finale** Saturday 31 March, 8:30pm.



Thanks to our wonderful sponsors - Empire, Kauri Coast Seafoods, Skelton's Paparoa Drapery, Maungaturoto Butcher, Grey Lynn Butcher and Hunting & Fishing. Visit www.paparoahotel.nz for the song list. Spot prizes too!

We have a new addition as well. Have you seen the Thirsty Tui Paparoa Hotel Bird House? Come and check it out ... It's just outside and it's the cutest thing!

We've had a wonderful summer and Pam, Gerard and all our great staff would like to thank all our local patrons who have helped to make it such a success.

Danielle Williamson

Cantata postponed 'Olivet to Calvary'

Further to previous advice regarding the proposed performance of 'Olivet to Calvary' by the combined ecumenical choir, we regret that due to illness amongst members, the choir will not now be presenting the Cantata at Easter as planned. It is hoped to be able to present it at a later date.



Ailsa Cullen, Convenor.
Enquiries to Sue Skelton
431 6224.

Starbright Wellness

Massage
Reiki
Reflexology

Fri/Sat
bookings

Vicky Jennings

021 2484259

144 Franklin Rd, Paparoa

COLOUR & CUTZ

- Ladies & Mens Cuts
- Colours & Highlights
- Perms
- Weddings
- Gift Vouchers



Salon 431 7255
Gaye 021 115 8056



**STILL LOVING MY NEW PREMISES ONE YEAR ON!
OPEN TUESDAYS - SATURDAYS**

Call in or Ph for Appts - 1994 Paparoa Valley Road



Kaipara Physiotherapy
LYNDESEY BARGH PHYSIOTHERAPY

Paparoa Medical Centre
Tuesday & Friday 8.30am-1pm
09 431 9062 or 09 439 1656

Maungaturoto Medical Centre
Mon/Thur/Fri (pm)
09 431 9062

email: lyndseybargh@callplus.net.nz

WHAT'S ON - MARCH 2018

The Kauri Museum open 7 days, free entry to Otamatea District residents
 Exhibitions: 'Tudor Collins - Man of Many Faces',
 Textiles - 'Pies & Pinnies' from 7 March
 Anzac Display from 21 April

Pioneer Luncheon Fri. March 16 Hosted by Paparoa Lions. Pete Hames 431 6822

Linking Hands 10-years Celebration, St Johns Hall, Mgto 2-4pm, see pg 15

Family Sports & Recreation Sports & Fun Family Fun Afternoon 10 March 3pm

Ruawai Lions Auction Sat 17 March 9am onwards. Kaipara Kumara forecourt

REGULAR EVENTS, MEETINGS AND ORGANISATIONS

Anglican Church St Marks 1st, 2nd & 4th Sundays 10am, Hook Road, Paparoa

Ararua Church 10.30am every Sunday, All welcome ph 431 6622

Art Studio, Ruawai Wed 10-12noon ph Frances 439 2554

Arty Farties Thur/Fri/Sun at the "Tile Shed"; Garage sale Sundays 10am to 2pm;
 Beginners Patchwork, Mon 7pm, Te Pahi River Dr. For info: ph Anne 431 6229

Badminton returns in Autumn Thursdays 7pm, Paparoa Hall ph Pete 4316 822

Crafternoons 1st & 3rd Wed in month, 10.30-4pm, Tinopai Hall ph Jo 431 7219

Exercise to Music Tue 10.30am Paparoa Hall \$5 ph Rose 431 7418

Farmers' Market Every Saturday 9-noon, Village Green. Contact Ruth 021 433 969

Grey Power Last Wed in month, 1pm, Anglican Church Hall, Mgto

Kaipara Marching Team Weds 4-5.30pm, Mgto, ph Rose Plunkett 431 7418

Library Mon 1.30-4.30pm, Wed 10am-12noon, Thu 1.30-4.30pm, Fri 9.30am-1pm
 Now open every Saturday 9.30-12.30pm. Closed 24 Dec - 5 Jan 431 7555

Line Dancing Thurs 10am-noon Paparoa Hall ph Rose 431 7418

Mainly Music Wed 9.30am Paparoa Comm Church, Carolyn Poyner 4316008

Maungaturoto Opportunity Shop Open Mon 10-1pm Wed 10-3pm Fri 10-3pm

Music Makers Second Wed, monthly, Pap Sports Pavillion, 7pm. 4316 722

Otamatea Quilters 1st and 3rd Mon month 10am, Paparoa Hall 09 439 2262

Outdoor Bowls Maungaturoto Green ph Tony 431 6026 or Brian 431 6884

Pahi Hall available for hire ph Sherryl Corbett 431 7127

Paparoa Community Church 10.30am every Sunday, 4 Hook Road 431 7106

Paparoa Garden Circle 2nd Wed of month Marg Bailey secretary. 09 280 9897

Paparoa Hall Functions venue ph Robyn 431 7306 or a/h Loraine 431 7290

Paparoa Lions Dinner Meetings 3rd Mon in month 6.30pm, Sports Pavilion

Paparoa Playcentre starts 30 Jan. Tuesday and Thursday 10am-1pm Visitors Welcome
 ph Bianca 431 6730 txt 021 782 456 or ph Jane 431 6148 paparoa@playcentre.org.nz

Paparoa Primary School Term 1 ends Friday April 13, Term 2 starts April 30

Paparoa Toy Library Wed 10.30-1pm, Paparoa Comm Church, Hilery 431 7330

Paparoa Volunteer Rural Fire Force (VRFF) 1st and 3rd Tuesday of the month
 6.30pm Depot Rd ph Cohan 431 6668

Plunket Ready Steady Wriggle Playgroup Mondays Paparoa Sports Pavillion
 Tina Ball 0210335128

Sacred Soul Circle 2nd Sundays, 10am-12 Marohemo Hall Helen 021 938 024

Selwyn Centre Thurs 10am for over 65's, St Marks, Hook Rd, ph 431 8193

Sports Pavilion Functions Venue Bookings ph Jane Bailey 431 6148

St Mary's Catholic Church 10am Wed, 6pm Sat, Maungaturoto

Table Tennis Tues 7.30pm, Sports Pavilion \$2 Pete 431 6822

Tennis Tues 5-6pm Primary & High School; 6pm Adults; Fri 9.30am
 ph Sue 431 6224 or Pete 431 6822

Village Flea Market 1st Sunday every month in the village 9am-12pm.

Waka Ama Tue & Thu 5pm, Sun 10am, Pahi Domain, ph Grant 027 474 3856

White Rock Gallery Open 7 days 10am-4pm, in Library building

Yoga: Monday: 6-7.15pm Mgto Centennial Hall: suitable for all levels

Thursday mornings: coming soon. Ph Annie 027 2644 for more info

PLEASE UPDATE US WITH YOUR DETAILS: press@paparoa.org.nz

Fresh flower bouquets

available - one day's notice.
 paparoaflorist@gmail.com
 Raylee Over 021 256 5893.

Native trees for sale

Pohutukawas \$5 to \$7.50
 Karakas \$5 to \$7.50
 Nikau Palms \$5 to \$10
 Phone Diane 09 4316221

Builder

Professional Quality Service
 Ph Will 020 40 909 828

Storage Available in Paparoa:

Secure 20 foot Containers
 contact Brian Plunkett
 09 4317 418. Paparoa
 County Depot Trust.

Energy transformation

A healing method that
 assists you to make
 positive change!
 No need to remain stuck
 any longer!!!!
 Jel Davenport
 021 165 6226

Place your Classified here

Your header line plus two
 small lines of text
 (e.g. approx 16 words, \$5)

LOCAL TIDES for March 2018

MARCH TIDES - CALCULATED for PAHI-WHAKAPIRAU

DATE	LOW	HIGH	DATE	LOW	HIGH
1st	5.35pm	11.39pm	17th	6.08pm	12.11pm
2nd	6.21pm	12.26pm	18th	6.43pm	12.44pm
3rd	6.40am	1.09pm	19th	6.57am	1.19pm
4th	7.23am	1.51pm	20th	7.34am	1.55pm
5th	8.04am	2.31pm	21st	8.13am	2.35pm
6th	8.44am	3.11pm	22nd	8.57am	3.19pm
7th	9.25am	3.52pm	23rd	9.46am	4.10pm
8th	10.08am	4.36pm	24th	10.45am	5.11pm
9th	10.59am	5.27pm	25th	11.55am	6.22pm
10th	12.02pm	6.29pm	26th	1.12pm	7.07am
11th	1.16pm	7.07am	27th	2.27pm	8.27am
12th	2.30pm	8.25am	28th	3.32pm	9.36am
13th	3.30pm	9.30am	29th	4.27pm	10.32am
14th	4.17pm	10.20am	30th	5.15pm	11.21am
15th	4.57pm	11.01am	31st	6.00pm	12.05pm
16th	5.33pm	11.37am			

Community Directory

EMERGENCY: FIRE ■ POLICE ■ AMBULANCE dial 111

COAST TO COAST HEALTH CARE

Maungaturoto Medical Centre: 8am-5pm Mon-Fri 09 431 8576
 Paparoa Clinic: Doctor Tue + Fri 8.30am-12.30pm..... 09 431 7222
 For urgent after hours medical service (Wellsford)..... 09 423 8086

DISTRICT NURSE Dargaville Hospital 09 439 3330
 Healthline - 24 hour service..... 0800 611 116

HOSPICE KAIPARA Dargaville Hospital 09 439 3330

KAIPARA DISTRICT COUNCIL Helpline 0800 727 059
 Mangawhai Office..... 0800 100 388

LINKING HANDS Health Shuttle Service, Maungaturoto 09 431 8969

LIONS CLUB PAPAROA Secretary Mark Pilkington09 431 7369

MAUNGATUROTO PHARMACY 09 431 8045

MAUNGATUROTO REST HOME 09 431 8696

NKT RECYCLING Huarau Road 10am - 2pm Mon-Sat.....021 08 207 395

OTAMATEA COMMUNITY SERVICES Community House 09 431 9080

PAPAROA LIBRARY Free Membership 09 431 7555

Mon 1.30-4.30pm, Wed 10am-12noon, Thu 1.30-4.30pm,
 Fri 9.30am-1pm. Saturdays 9.30-12.30

PAPAROA PLAYCENTRE paparoa@playcentre.org.nz

PAPAROA PLUNKET Clinic 4317340 Cynthia Keay 0276753488

PLUNKET Helpline 0800 933 922

PAPAROA PRIMARY SCHOOL 09 431 7379

PROGRESSIVE PAPAROA INC (PPI)Graham Taylor... 09 431 7209

PARENT PORT Inc. free help for families Linda 09 425 9357

PHYSIOTHERAPY Lyndsay Bargh Mon/Wed/Fri from 8am...431 8576

PODIATRIST / FOOTCARE Jayne Short020 4022 6598

YOUTH & WHANAU FOCUS South Kaipara, Rose 09 431 7418

A great Show day!



Exciting days at the Pahi Regatta

The 2018 Pahi Regatta had beautiful weather and 28 boats from Dargaville, Helensville and Pahi took part in the boat races. The film crew from Coast TV were videoing with their drone and were quite interested when the churning waves were throwing a well known boat 'Penny Arcade' from left to right, or in sea talk, from port to starboard. The races are so exciting and skilful. There were carnival sideshows for the kids and on the Sunday pony rides which made many boys and girls ecstatic. The bathtub race was well turned out and we are re-instating the run around the hill competition. Miss Pahi had a good number of contestants and was great entertainment for people in the shady marquee on Sunday. A new category, Mr Beer Belly showed a stage full of contestants, with tough competition and the prizes were generously donated by Thirsty Liquor in Maungaturoto. Tim Magill has been MC of the two day Regatta for twenty years now, We appreciate the time and effort he puts into such an iconic, historic event. Thanks to everyone who supports the Pahi Regatta, it will be great to have it for years to come.

Elarna Sheppard



PAPAROA FARMERS MARKET
LOCAL GOODS DIRECT FROM THE PRODUCER

EVERY SATURDAY
gam-noon
at the Village Green
ph Ruth 021 433 969

REX BROWNE CONTRACTING

- Limestone & Metal Cartage
- Truck & Digger Hire
- Farm Roads
- Earthwork & Dams
- House Sites & driveways
- Wrapped Silage & Hay
- Cultivation
- Fencing & Mulching

Maize Silage planting & harvesting

☎ 09 431 7556
☎ 021 720 590

Kevin's Shed
panel beating & repairs

Just ask
027 642 4991
09 431 6444

3245 Paparoa-Dakleigh Rd

do you need a **WEBSITE ?**
Local, friendly website design & management.
sme-sitedesign.co.nz

Contact Paul for more information:
E: paul@sme-sitedesign.co.nz
T: 09 431-7063
M: 022 625-4156

Get More Customers
Cost Effective Marketing